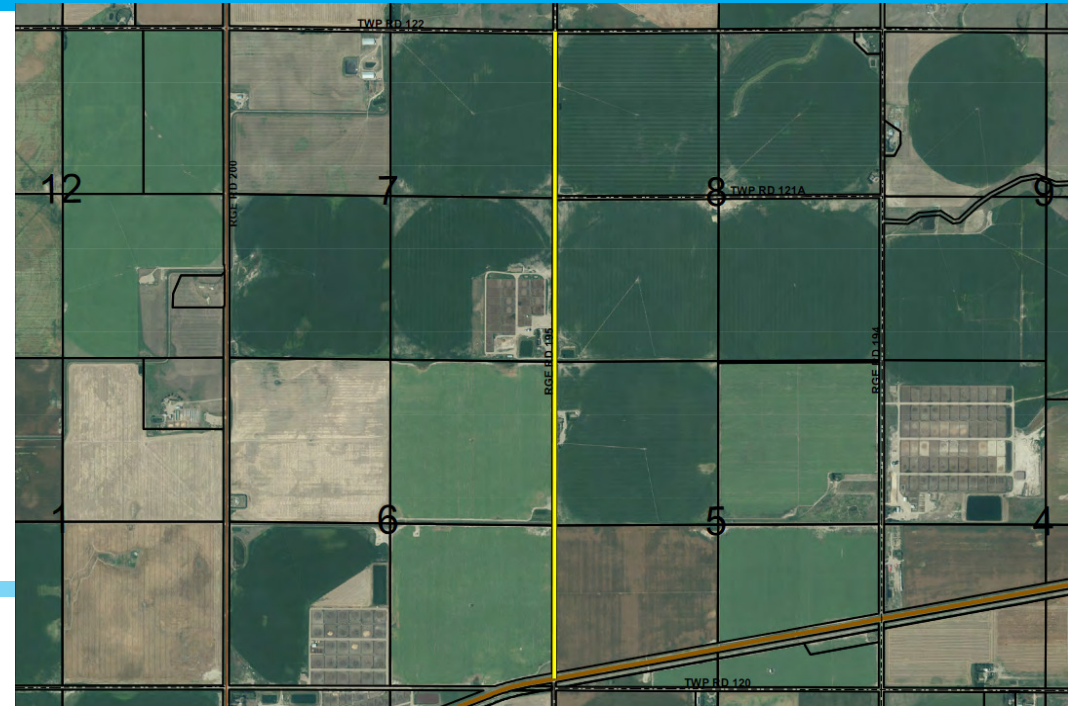


WHAT: Reconstruction of 3.2km of road.

WHERE: Range Road 19-5 between Highway 25 and Range Road 12-2.

WHY: This roadway is very busy and has numerous areas that soften during wet weather conditions. Steep side slopes create dangerous driving conditions.



WORK COMPLETED TO DATE

Construction is ongoing. Scheduled for completion by end of October 2018.

BENEFIT TO RESIDENTS

The construction on this road will ensure it is safe and reliable for all road users.



Total project costs: \$1.25 million

Funded through a federal (Federal Gas Tax Fund) and provincial grant (Municipal Sustainability Initiative)



**Scheduled
completion date:
October 2018**



Questions?
mailto:mailbox@lethcounty.ca
(403) 328-5525