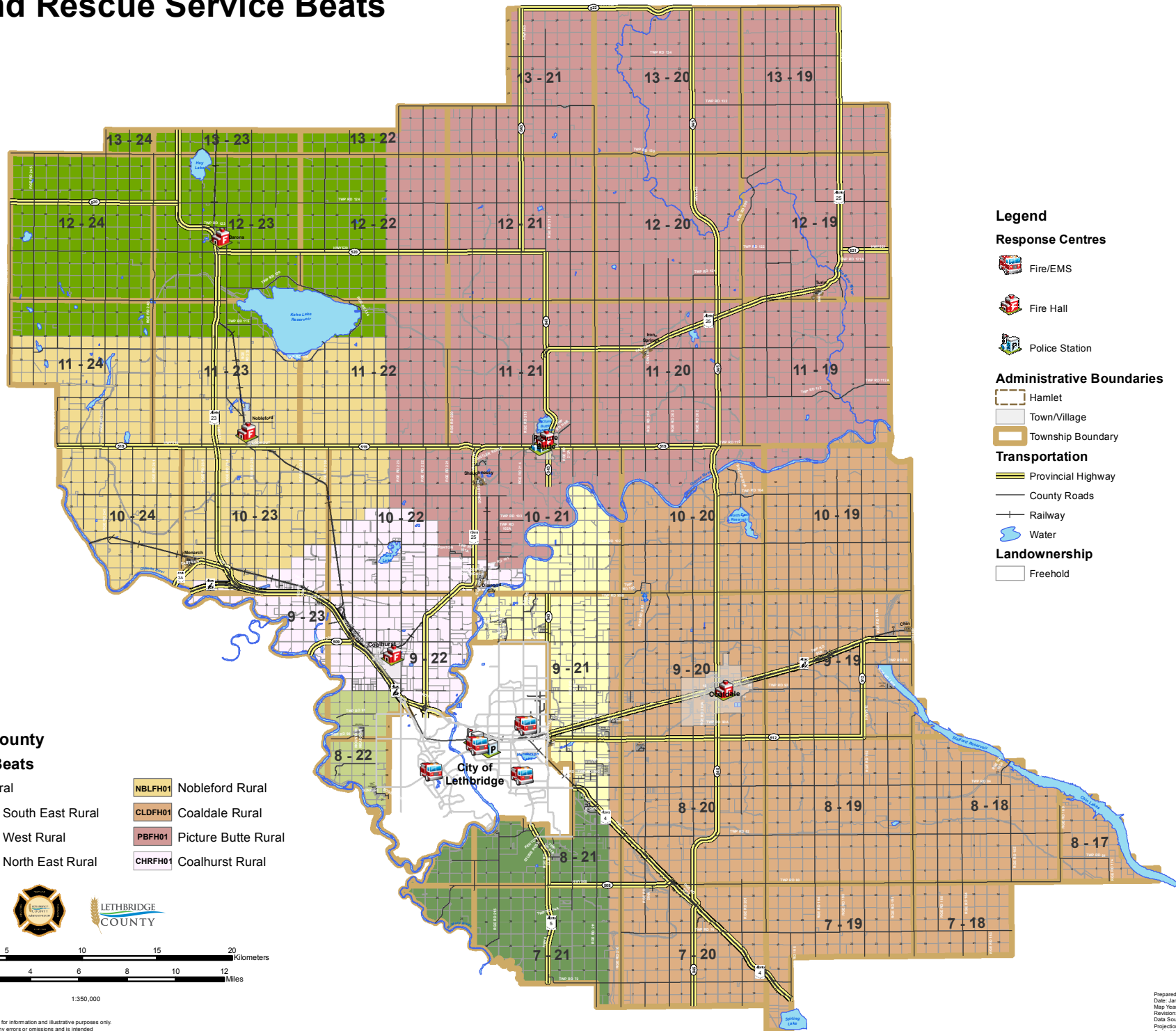


# Fire and Rescue Service Beats



## Legend

### Response Centres

- Fire/EMS
- Fire Hall
- Police Station

### Administrative Boundaries

- Hamlet
- Town/Village
- Township Boundary

### Transportation

- Provincial Highway
- County Roads
- Railway
- Water

### Landownership

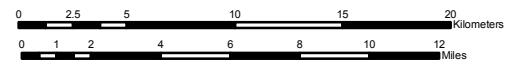
- Freehold

## Lethbridge County Fire/Rescue Beats

- |                                    |                            |
|------------------------------------|----------------------------|
| BAFH01 Barons Rural                | NBLFH01 Nobleford Rural    |
| LEFH03 Lethbridge South East Rural | CLDFH01 Coaldale Rural     |
| LEFH02 Lethbridge West Rural       | PBFH01 Picture Butte Rural |
| LEFH04 Lethbridge North East Rural | CHR FH01 Coalhurst Rural   |



LETHBRIDGE COUNTY



1:350,000



Lethbridge County 2018  
The information contained in this document is for information and illustrative purposes only. Lethbridge County will not be held liable for any errors or omissions and is intended for reference only. This document may not be copied or redistributed in any form without prior consent from Lethbridge County.

Prepared By: Lethbridge County, GIS  
Date: January 2018  
Map Year: 2018  
Revision: 0  
Data Source: Lethbridge County, AtlasIS  
Projection: Universal Transverse Mercator Zone 12N  
Central Meridian: -111  
Scale Factor: 0.9996  
Datum: North American Datum 1983