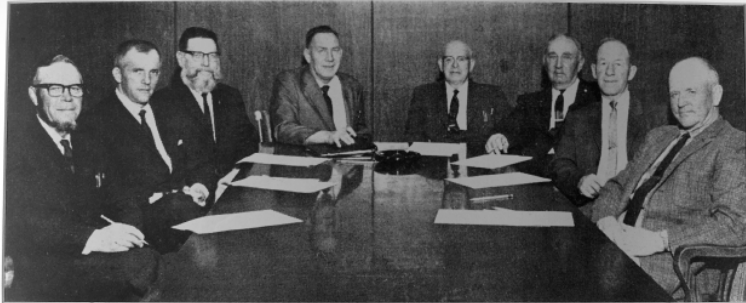


# LETHBRIDGE COUNTY COUNCIL 1964-PRESENT



COUNTY OF LETHBRIDGE No. 26 (1967)

CLERK - HENRY NUMMI • DEPUTY REEVE - MIRO TOMASTA • LEONARD HANEY • COUNSELLORS - WIL MARELL SECRETARIES  
HENRIKSON • H.G. HOULTON (REVEE) • OTO WOBICK • HAROLD DUPEN • RODERS DAVIS (COUNCILLOR)

## 1964-1971

Harold Dupen, Reeve (1971), Deputy Reeve (1964-1966, 1969-1971)

Otto Wobick, Deputy Reeve (1964)

Henry Nummi, Deputy Reeve (1967-1968)

Miro Tomasta

J. Rogers Davis

Leonard Haney (1964-1970)

Richard Papworth (1970-1971)

## 1971-1977

Richard Papworth, Reeve

James Nichol, Deputy Reeve (1971-1972)

Steve Slemko, Deputy Reeve (1972-1973)

Otto Wobick, Deputy Reeve (1973-1977)

Henry Nummi

Miro Tomasta

John Murray

## 1971 County of Lethbridge No. 26



Left to Right - MIRO TOMASTA, HENRY NUMMI, R.E. GRANT - ASST. SEC. TREAS., W. R. MADILL - SEC. TREAS.  
HAROLD DUPEN - REEVE, OTTO WOBICK, RODERS DAVIS, R.W. PAPWORTH.

Inset - H.G. (STEVE) HOULTON, REEVE - 1964 - AUGUST 1971.

## 1973 County of Lethbridge No. 26



Left to Right - H.Y. NUMMI, MIRO TOMASTA, A.J. SAFFETY - ASST. MANAGER, R.E. GRANT - ASST. SEC. TREAS.,  
WIL MARELL - COM. MANAGER, R.M. PAPWORTH - REVEE, O.T. WOBICK, J.W. MURPHY, STEVE SLEMKO, J.M. KIDOL.

# LETHBRIDGE COUNTY COUNCIL 1964-PRESENT



## 1977-1980

Richard Papworth, Reeve (1978-1980)  
Lloyd Trapp, Reeve (1977-1978)  
John Murray, Deputy Reeve (1977-1978)  
Steve Slemko, Deputy Reeve (1978-1980)  
Miro Tomasta  
Roelof Heinen  
Hanz Rutz

## 1980-1983

Richard Papworth, Reeve  
Steve Slemko, Deputy Reeve  
John Murray  
Roelof Heinen  
Lloyd Trapp  
Hanz Rutz



# LETHBRIDGE COUNTY COUNCIL 1964-PRESENT

*County Of Lethbridge No. 26 Oct. 1983*



*H. Rutz   J. Clay   Michael Murray   W. W. Papworth - Reeve   J. Pank   - Murray   J. Pank  
J. W. Murray   R. Heinen   J. Murr   L. H. Trapp*

## 1983-1986

Dick Papworth, Reeve  
Steve Slemko, Deputy Reeve  
John Murray  
Judith Nickol  
Roelof Heinen  
Hans Rutz  
Lloyd Trapp

## 1986-1989

Reeve: Dick Papworth (to 1988),  
and Roelof Heinen (1988-1989)  
Roelof Heinen, Deputy Reeve  
(1986-1988)  
Jerry Virginillo, Deputy Reeve  
(1988-1989)  
John Murray  
Roelof Heinen  
Hans Rutz  
Francis Wright  
Frank Nemeth

COUNTY OF LETHBRIDGE NO. 26  
OCTOBER 1986



© 1986 LETHBRIDGE COUNTY COUNCIL. ALL RIGHTS RESERVED. PHOTOGRAPHY BY J. PANK

# LETHBRIDGE COUNTY COUNCIL 1964-PRESENT



## 1989-1992

Roelof Heinen, Reeve  
 Jerry Virginillo, Deputy Reeve (1989-1991)  
 Lloyd Trapp, Deputy Reeve (1991-1992)  
 Dick Papworth  
 Francis Wright  
 Leroy Niedermier  
 Albert Kooy

## 1992-1995

Roelof Heinen, Reeve (1992-1993)  
 Eugene Wauters (1993-1995)  
 Albert Kooy, Deputy Reeve (1993-1995)  
 Leroy Niedermier (1992-1994),  
 Deputy Reeve (1992-1993)  
 Marlene McCann  
 Eugene Wauters  
 Alan Fraser  
 David Oseen  
 David Carlson (1994-1995)



# LETHBRIDGE COUNTY COUNCIL 1964-PRESENT

COUNTY OF LETHBRIDGE No. 26  
1995



Seated Left to Right  
John Konynenbelt, Albert Kooy, Eugene Wauters, David Carlson  
Standing Left to Right  
Roelof Heinen, David Oseen, Sheldon Smith - County Manager, Lloyd Trapp

## 1995-1998

Eugene Wauters, Reeve (1995-1996)  
Lloyd Trapp, Reeve (1996-1998)  
Albert Kooy, Deputy Reeve  
Roelof Heinen  
David Oseen  
David Carlson  
John Konynenbelt

## 1998-2004

David Oseen, Reeve  
John Kolk, Deputy Reeve (1998-2001)  
Lorne Hickey, Deputy Reeve (2001-2004)  
Hans Rutz  
Eugene Wauters  
John Willms  
Mark Osaka

County of Lethbridge No. 26  
October 1998



FRONT ROW - LEFT TO RIGHT  
Hans Rutz, Eugene Wauters, David Oseen, John Kolk, Deputy Reeve  
BACK ROW - LEFT TO RIGHT  
David Oseen, County Manager, John Willms, Lorne Hickey, Mark Osaka

# LETHBRIDGE COUNTY COUNCIL 1964-PRESENT



*County of Lethbridge Council*

FRONT ROW L-R: John Kolk, Hans Rutz, David Oseen (2005-2007), John Willms, Eugene Wauters

BACK ROW L-R: Mark Osaka, Dennis Shigematsu (DIRECTOR OF CORPORATE SERVICES), Robert Singleton (COUNTY MANAGER), Lorne Hickey (Deputy Reeve)

## **2004-2007**

David Oseen, Reeve (2004- 2005), and Deputy Reeve (2005-2007)

Lorne Hickey, Deputy Reeve (2004-2005), and Reeve (2005-2007), and David Oseen (2005-2007)

Eugene Wauters

Mark Osaka

Hans Rutz

John Kolk

John Willms

## **2007-2010**

Lorne Hickey, Reeve

Hans Rutz, Deputy Reeve (2007-2008)

Henry Doeve, Deputy Reeve (2008-2010)

John Willms

Henry Doeve

Bonnie Cote

Tom White

Morris Zeinstra



*County of Lethbridge Council  
Elected October 2007*

Front Row L-R: Morris Zeinstra, Bonnie Cote, Lorne Hickey, Dennis Shigematsu  
Back Row L-R: John Willms, Tom White, Henry Doeve, Hans Rutz

# LETHBRIDGE COUNTY COUNCIL 1964-PRESENT



## **2010-2013**

Lorne Hickey, Reeve  
Henry Doeve, Deputy Reeve  
John Willms  
Tom White  
Morris Zeinstra  
Ken Benson  
Steve Campbell



## **2013-2017**

Lorne Hickey, Reeve  
Henry Doeve, Deputy Reeve  
John Willms  
Tom White  
Morris Zeinstra  
Ken Benson  
Steve Campbell

# LETHBRIDGE COUNTY COUNCIL 1964-PRESENT



## **2017-2021**

Lorne Hickey, Reeve  
Ken Benson, Deputy Reeve  
Tory Campbell  
Robert Horvath  
Morris Zeinstra  
Klaas Vander Veen  
Steve Campbell