

2. REGULATORY SERVICES

are provided by Lethbridge County Community Peace Officers, the RCMP and the City of Lethbridge Fire Prevention Bureau for Fire Inspections.

The Alberta Sheriffs Department, Fish and Wildlife, Alberta Environment and Alberta Transportation (Commercial Vehicles) are a few of the other regulatory agencies working in Lethbridge County.

Compliance to the Alberta Building Code and the Alberta Fire Code is mandatory in Alberta. Fire inspections of most non-residential and some residential buildings are conducted regularly. To be connected to a Building or Fire Safety Codes Officer please call [403-380-1591](tel:403-380-1591).

RCMP services in Lethbridge County can be contacted using their non-emergency complaint line at [403-732-4429](tel:403-732-4429).

Our Peace Officers provide bylaw enforcement and the enforcement of several Provincial Acts; the Traffic Safety Act (including Commercial Vehicle Weights and Measures), the Dangerous Dogs Act and the Highway Development and Protection Act to mention just a few. The Peace Officer non-emergency phone number is [403-634-0755](tel:403-634-0755).

Lethbridge County sends out a special thanks to those men and women who volunteer their time every day as Fire and Rescue Services Professionals throughout this region.



For more information about Lethbridge County Emergency Services please visit our website at

www.lethcounty.ca

or call us at 403-328-5525

Updated: May 2017



Fire & Rescue Services
Regulatory Services
Disaster Services

Lethbridge County Emergency Services Department



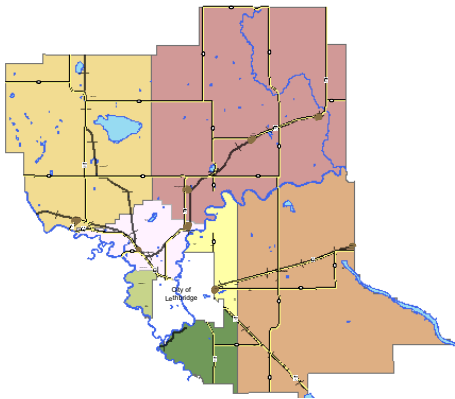
www.lethcounty.ca

Information about Emergency Services in Lethbridge County that you should know.

Dial **911** for any emergency requiring Police, Fire or Ambulance. A **911** Dispatcher will ask you a series of questions in order to get you the best emergency response. It is important to know your Municipal Address or be able to describe where you are.








1. FIRE AND RESCUE SERVICES

are provided through our contractual agreements with our urban neighbours many of which are “volunteer” based. Fees for services do apply.



Lethbridge County

Emergency Response Zones (ERZ)

-  Lethbridge West Rural
-  Lethbridge South East Rural
-  Lethbridge North East Rural
-  Nobleford Rural
-  Coaldale Rural
-  Picture Butte Rural
-  Coalhurst Rural

3. DISASTER SERVICES

are best supported by the citizens of Lethbridge County first!

Please be aware and prepared.

Have a 72hr. Emergency Kit ready. In the event of a disaster, Lethbridge County may activate its Municipal Emergency Plan and its Emergency Coordination Centre. Our first priority is public safety. One of the tools we may use to alert the public of an incident is the Alberta Emergency Alert system.



GET

APP!

THE

By following instructions, monitoring local media for updates, staying away from affected areas, evacuating if ordered or sheltering in place if ordered you will be providing vital assistance to emergency responders.

Alberta Emergency Management Agency provides valuable information to the public on emergency preparedness at:

www.aema.alberta.ca



4. FIRE BANS AND FIRE PERMITS

If the Fire Hazard is high, Lethbridge County may impose a Fire Ban which automatically cancels all issued Fire Permits. Fire Permits are free of charge and are normally valid for 14 days from the day of issue. Please check our website for more information and before you burn to ensure no Fire Ban is in effect.

www.lethcounty.ca



Burn Ban Lifted



Burn Ban In Effect

5.

FALSE

ALARMS

The 1st one is free. Subsequent false calls for emergency services are billed out according to the Schedule of Fees Bylaw.

6. AMBULANCE SERVICES

are governed by Alberta Health Services and are operated locally.



There are a number of ambulance stations throughout Southern Alberta all of which respond into Lethbridge County. The Chinook Regional Hospital is Southern Alberta’s main medical facility located in the City of Lethbridge. The Hospital’s main phone number is **403-388-6111**.