



BROWN SPOT NEEDLE BLIGHT OF PINE

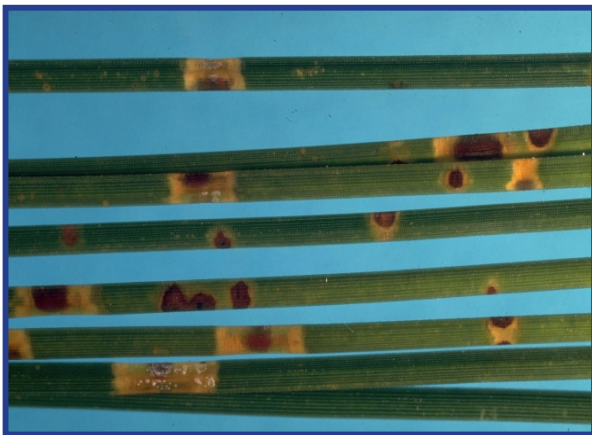
Scirrhia aecicola (Mycosphaerella dearnessii)

Hosts:

Pine

Distribution and Disease Cycle:

This fungal disease attacks many species of pines, attacking developing, susceptible needles as they emerge in summer. Spores released from fruiting bodies on infected needles are spread by rain, animals or human activities to healthy current season needles where they germinate and enter needles through stomatal pores. Later in summer, new fruiting bodies are produced with mature spores that overwinter on infected or dead needles.



Brown spot needle blight on pine needles
Photo credit: USDA Forest Service (Region 8)
Southern Archive, USDA Forest Service,
Bugwood.org



Brown spot needle blight on Scots pine
Photo credit: Minnesota Department of Natural Resources
Archive, Minnesota Department of Natural Resources,
Bugwood.org

Control:

If possible, remove and destroy infected branches, but do not prune trees during wet weather which can spread infection. Apply chlorothalonil as per label instructions beginning in spring when new shoot growth is 1-5 cm in length. Repeat applications at 3 to 4 week intervals during wet years or if infection is severe.

Symptoms and signs:

Yellow, water-soaked looking spots form on infected needles, eventually becoming brown with yellow borders or bands. In contrast to Lophodermium needle cast, which becomes evident in spring, lesions caused by brown spot needle blight do not usually appear until mid-late summer. Needles begin dying from the tips back until the needle is entirely brown, dropping in fall. Infections often begin on lower branches on the north side of the tree. In minor infections, needles will drop but buds can usually produce new foliage the following season; in more severe infections, entire branches can be killed.

For further information please contact:

Agroforestry Development Centre
P.O. Box 940
Indian Head, Saskatchewan, S0G 2K0
Phone: 1-866-766-2284
Email: agroforestry@agr.gc.ca
Website: www.agr.gc.ca/agroforestry