



# AG-PLASTICS MANUAL BALER

MADE WITH  
RECYCLED PLASTICS



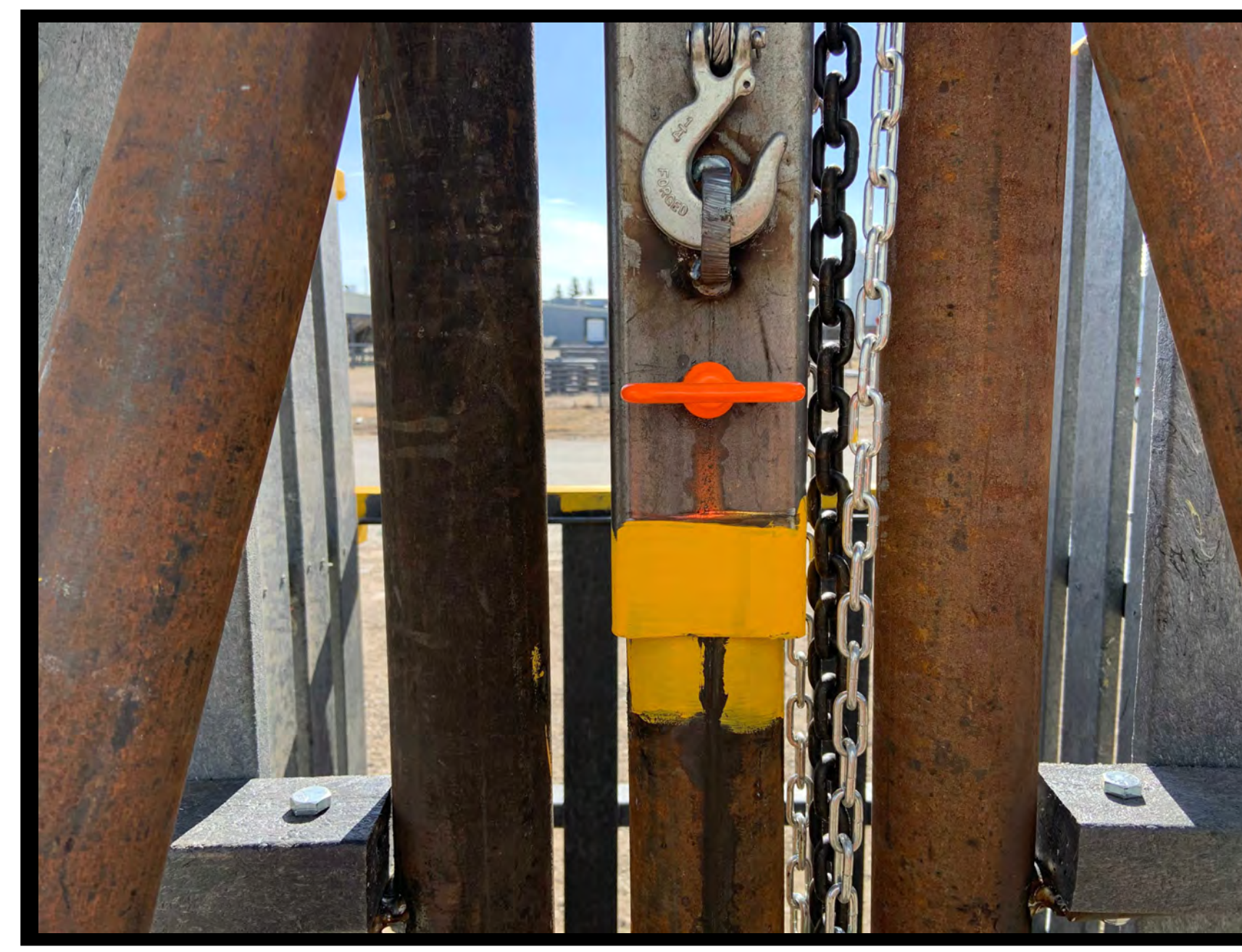
## CAUTION! BEFORE OPERATING



Pinch points marked  
in yellow



Ensure lid is in safety position and locked  
with safety pin before loading



Never work  
beneath lid in open  
position

## OPERATING INSTRUCTIONS

### 1. PREPARING PLASTIC – (4'x4' SQUARES)



Shake excess debris  
and lay flat



Fold sheets into 4'  
wide strips



Fold strips into 4'  
squares



Final sheet ready  
for loading

### 2. LOADING PLASTIC



Ensure lid is in  
locked position



Prepare 6-strands of  
twine (14' lengths)



Secure front and  
sides with pins

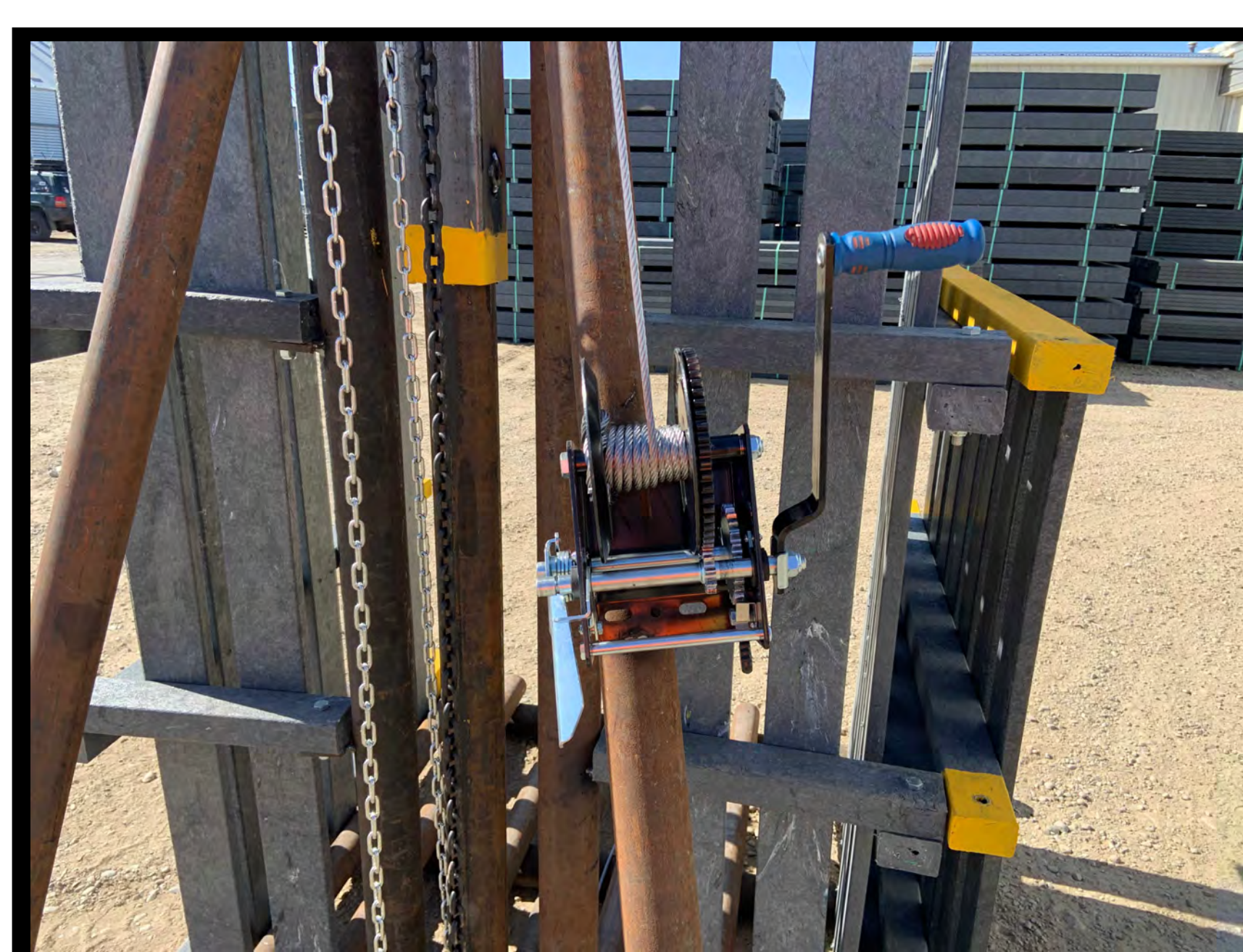


Insert plastic sheets  
alternating direction

### 3. COMPRESSING BALE



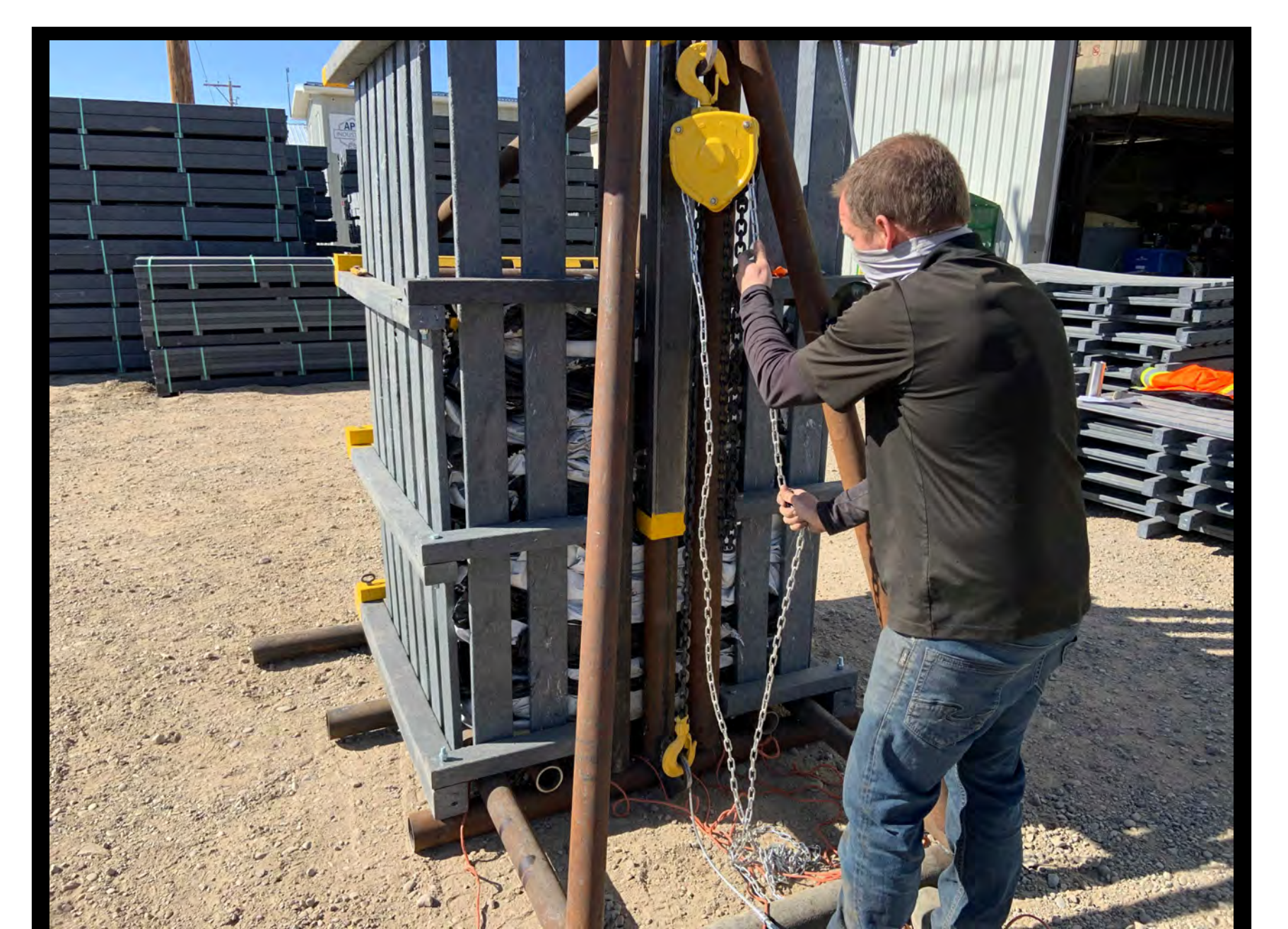
Position lid above  
plastic



Lower lid with  
winch onto plastic

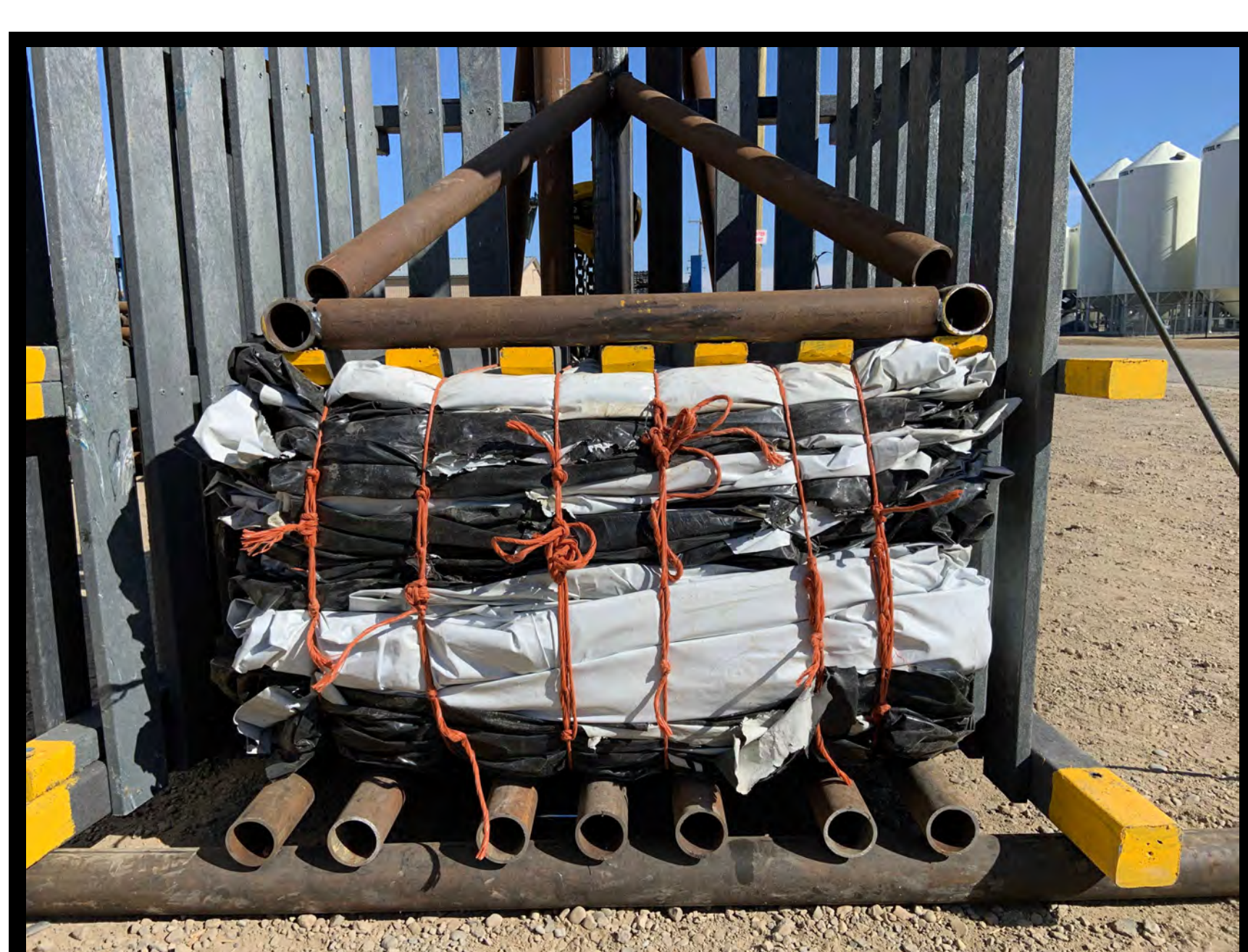


Disengage winch  
lock & attach hoist



Compress with  
chain hoist

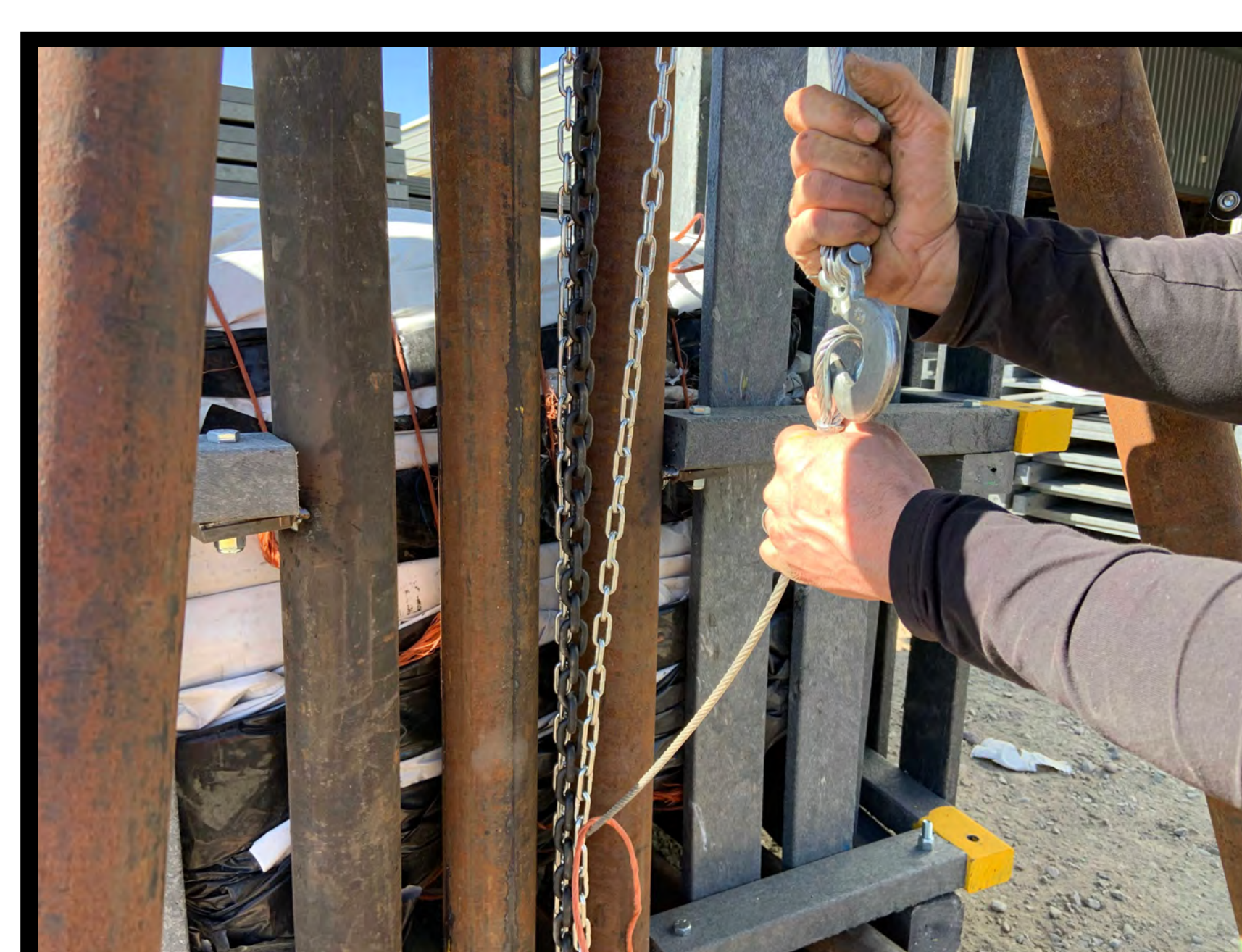
### 4. FINISHING BALE



Open front/sides &  
secure with twine



Raise lid & lock with  
safety pin



Attach bale kicker cable to winch and raise  
bale until it rolls out onto a pallet

